

# S1 Biology - Variety of Life

## Revision Sheet

### Classification

Classification is organizing living things (organisms) into groups based on their similarities and differences.

### Invertebrates

Invertebrates are animals without a backbone. Some examples of invertebrates are:



*Crab*



*Spider*



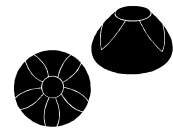
*Jellyfish*



*Mussel*



*Starfish*



*Sea Urchin*

### Vertebrates

Vertebrates are animals with a backbone. The vertebrates are classified into 5 groups. Each group has different features.



AMPHIBIANS - Live on land and in water, Have damp skin, Lay soft eggs in water



FISH - Have scales. Have fins. Have gills to breathe underwater



REPTILES - Have hard, dry scales, Lay soft-shelled eggs on land



BIRDS - Have feathers, Lay eggs on land, Most can fly, Have a beak



MAMMALS - Have fur or hair, Feed on a mother's milk, Have live young

## Plants

People use plants for timber, to produce clothes, to make furniture, for food and to make medicines. Plants can be split into five groups:

**MOSSES AND LIVERWORTS** - No true roots, Reproduce by spores in capsules

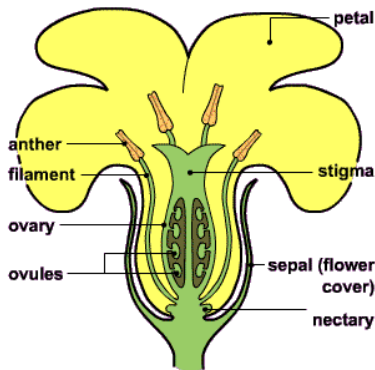
**CLUB MOSSES** - True roots, Stems with leaves arranged in spirals, Spores are produced in cones.

**HORSETAILS** - True roots, Stems bear scale-like true leaves in whorls, Spores in cones

**FERNS** - True roots, Stems with true leaves divided into leaflets, Spores produced under the leaf

**CONIFERS** - True roots, Needle-like leaves, Seeds produced in cones

**FLOWERING PLANTS** - True roots, True stems and leaves, Produce flowers and seeds



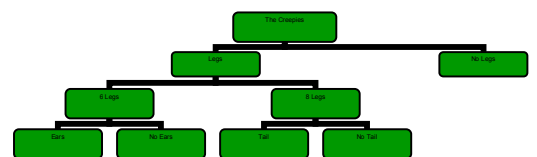
Part of Flower	Function (job)
Petal	Attract insects
Stigma	Sticky to catch pollen
Anther	Produces pollen
Sepal	Protects flower when in bud
Nectary	Produces nectar (a sweet liquid) to attract insects
Ovary	Produces female sex cells

## KEYS

To identify unknown species a biologist can use a **KEY**. Biological keys use easily identifiable features to distinguish between species. There are three types of biological key:

Whale	Size	Teeth	Colour
Blue whale	Large	Absent	Blue
Fin whale	Large	Absent	Blue & white
Sperm whale	Large	Present	Blue
Beluga whale	Small	Present	White
Killer whale	Small	Present	Blue & white

1. Male ..... Go to No.2  
Female ..... Go to No.4
2. Wearing glasses ..... **Paul**  
Not wearing glasses ... Go to No. 3
3. Dark hair ..... **Matthew**  
Fair hair ..... **Chris**
4. Long straight hair ..... **Jane**  
Short curly hair ..... **Alison**



PAIRED STATEMENT

LATERAL

BRANCHING